

Ethnomedicinal uses of plants by the *Lodhas* tribal group of West Bengal, India

Sagari Chaudhury^{1,2}, Harish Singh¹ and Chowdhury Habibur Rahaman^{2*}

¹Central Botanical Laboratory, Botanical Survey of India, Howrah, India-711103

²Department of Botany (UGC-DRS-SAP & DST-FIST sponsored)

Visva-Bharati, Santiniketan - 731235, West Bengal, India

*habibur_cr@rediffmail.com

Received: 17 March 2018

Accepted: 21 May 2018

Abstract

Lodhas of West Bengal utilize a diversified phyto-resources including forest flora for their survival. The ethnobotanical survey was undertaken in the selected *Lodha* populated villages of six districts of West Bengal, India during 2014-2017 with the objectives of documentation of the phyto-diversity used by the *Lodhas* and making an inventory to enrich the ethnobotanical data base of *Lodha* tribe, West Bengal. In this study, a total of 250 vascular plant species belonging to 83 families along with 728 ethnobotanical uses which belong to the 12 numbers of use categories have been documented. Highest number of species utilized by the *Lodhas* belongs to the family Leguminosae (28), followed by Poaceae (14), Asteraceae (11), Dioscoreaceae (10), etc. Some of the important plants used more frequently by the *Lodha* people in the state of West Bengal are *Aristolochia indica* L., *Asparagus racemosus* Willd., *Dioscorea alata* L., *D. glabra* R. Baron, *Hemidesmus indicus* (L.) R. Br. ex Schult., *Solena amplexicaulis* (Lam.) Gandhi, etc. A number of traditional practices still exists among the *Lodhas* which are employed for conservation of local biodiversity and to ensure the sustainable livelihood of the *Lodha* people.

Keywords: *Lodhas*, West Bengal, Phyto-diversity, Traditional uses, Ethno-conservation

1. Introduction

The *Lodha* tribe of West Bengal has been declared as Particularly Vulnerable Tribal Groups (PVTGs) by the Government of India (Bhatt and Bhargava, 2006). They are categorized by a low rate of growth of population, pre-agricultural level of technology and extremely low level of literacy (Particularly Vulnerable Tribal Group-Ministry of Tribal Affairs, 2012). *Lodhas* of West Bengal were designated as one of the 'criminal tribes' till the revocation of the Criminal Tribes Act of 1952, India. This criminal propensity of them is not hereditary; the most important cause of their criminality is the loss of their traditional means of livelihood (Bhowmick,

1994). Nearly all areas of West Bengal have received attention of the ethnobotanists. Quite a good number of significant ethnobiological works of West Bengal have been carried out documenting the traditional uses of bioresources by different ethnic communities (Chaudhury *et al.*, 2016; Das and Rahaman, 2014; Mitra and Mukherjee, 2009; Mondal and Rahaman, 2012; Mukherjee and Bauri, 2011; Rahaman and Karmakar, 2015; Rahaman, 2012; Rahaman and Das, 2012; Rahaman and Pradhan, 2011; Rahaman and Saha, 2011). In West Bengal, ethnobotanical work has been focused mostly on dominant tribal groups like Santhal, Oraon, Bhumij, Mahali, Kheria, Munda (Bhakat and

Pandit, 2004; Das and Chattopadhyay, 2001; Ghosh and Sarkhel, 2013; Mitra and Mukherjee, 2009; Pal and Jain, 1998; Rai Chaudhuri and Pal, 1978), but documentation of the ethnobotanical knowledge on *Lodhas* is very scanty (Chaudhury et al., 2017, Pal and Jain, 1989; Pant et al., 1993; Rai Chaudhuri and Pal, 1975; Sarkhel, 2014). It is interesting to note that most of the published literatures on *Lodhas* ethnobotany are either from the undivided Medinipur district or West Midnapore district of West Bengal, although the *Lodhas* are inhabited in other districts of the state like Alipurduar, Bankura, Purulia, South-24 Parganas, Jhargram, etc. No systematic study on ethnobotanical knowledge of Lodha tribe has so far been carried out from those Lodha inhabited districts of West Bengal. According to Census of India, 2001, the population of Lodha and Kharia tribes in West Bengal was 1, 96, 933 (Lodha- 84966 and Kharia-1,11,967) (Bhat and Bhargava, 2006). In 2011, the population of Lodha, Kheria and Kharia tribes was 1, 08,707 (Census of India, 2011). It is found that after ten years the population of Lodha, Kheria and Kharia tribes have declined to a greater extent i.e. more than 88,000. Though in the census report of 2011, the Lodha population has not been defined separately, but it indicates that there is a sharp decline of populations of the Lodhas including Kheria and Kharia tribes. Thus it is understood that population of the *Lodhas* are also declining very rapidly and there is an urgent need to document their indigenous knowledge about plants before it is totally vanished. In this scenario, present study has been undertaken to make an inventory of the phytoresources related to the existing traditional knowledge of this neglected ethnic group of West Bengal.

2. Materials and Methods

Regular and systematic ethnobotanical surveys were carried out in selected *Lodha* populated villages of Paschim Medinipur, Jhargram, Bankura, Purulia, Alipurduar and South 24 Parganas districts of West Bengal, India during 2014-2017 in different seasons (Figure 1, Map). PIC was taken from the informants. A semi-structured interview was prepared in

local language (i.e. Bengali in Oriya accent) before interviewing the informants (Martin, 2008). During field survey two methods namely walk in the wood (*in situ* method) and freshly collected plant materials (*ex situ* method), have been employed for collection of information regarding uses of phytoresources by the *Lodhas*. These two methods are suitable tools used by the ethnobotanists all over the world to get maximum precise information (Thomas et al., 2007). A total of 178 informants were interviewed during this survey. Collected plant specimens were identified with the help of local flora (Anonymous, 1997; Paul et al., 2015) and one set of herbarium specimens deposited as voucher at the Central National Herbarium, Howrah (CAL). Herbarium specimens of another set were deposited in the Ethnobotanical Herbarium of Central Botanical Laboratory, Botanical Survey of India, Howrah for future references. The scientific names of the plant species were updated from 'The plant list, 2010'.

3. Results and Discussion

The present investigation has been carried out to record the information regarding traditional or folk uses of plants by the *Lodhas* as medicine, wild edible, fodder, non timber forest products, poison, narcotic, dye, etc. (Figure 2). The plants associated with the sacred groves, religious faiths and beliefs of the *Lodha* tribe were also documented.

In this study, 250 species with 728 ethno botanical uses have been recorded which are used by *Lodha* tribal community for various purposes of their livelihood. The recorded 250 plant species belong to 83 families which are distributed in three major groups of vascular plants - dicotyledons (202 species), monocotyledons (46 species) and pteridophytes (2 species). The highest number of species used by the *Lodha* people are from the family Leguminosae (28 species), followed by Poaceae (14), Compositae (11), Apocynaceae (11), Dioscoreaceae (10), etc. Recorded 250 species have been enumerated in a tabular form along with their families, field numbers and use categories (Table 1).

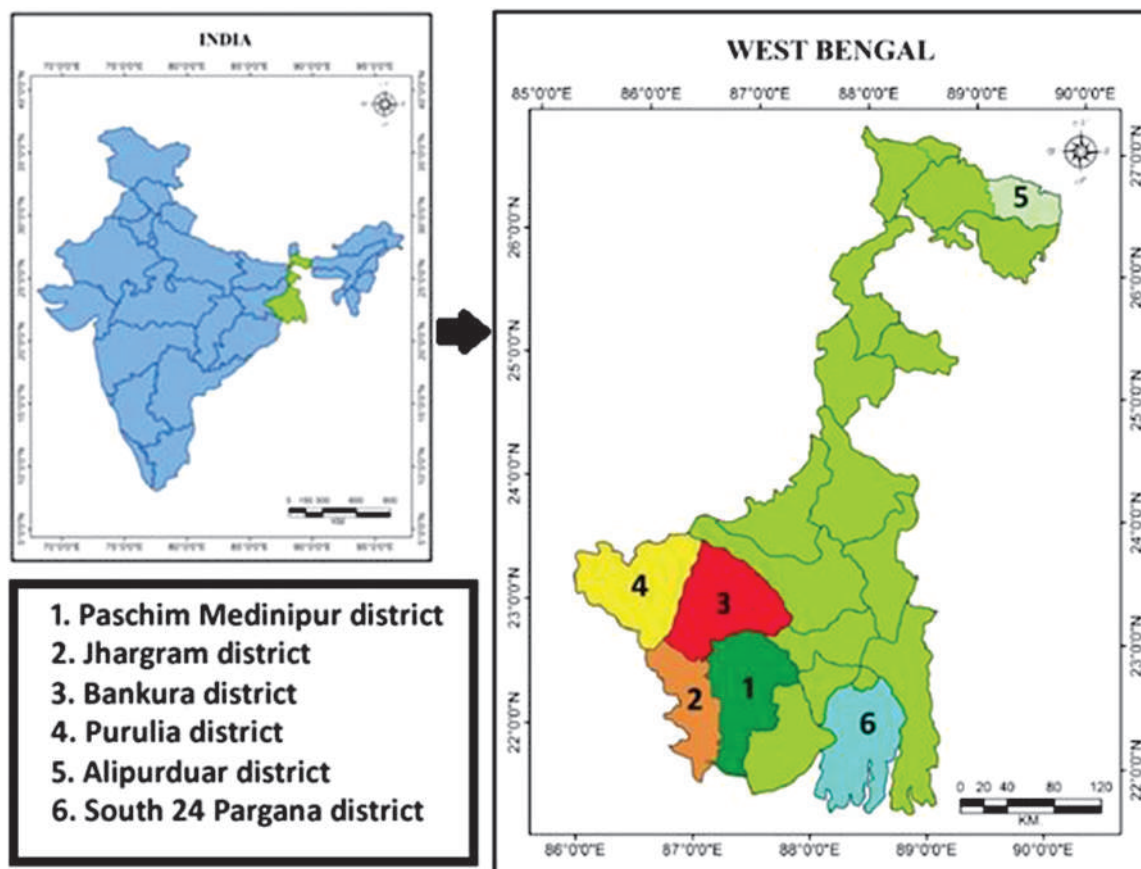


Fig.1. Map of the surveyed districts of West Bengal, India

The 250 recorded plant species were used for 728 ethnobotanical uses which are grouped under 12 use categories like B-Beverage, C-Conservation, F- Fodder, DY- Dye- yielding plants, EM- Ethnomedicine, V-Veterinary, WEP-Wild edible plants, MIS- Miscellaneous, MR-Magico-religious, N- Narcotic, NTFP- Non-timber forest product, P-Poison and PI-Poison indicator. About 215 number of plant species come under the use category of ethnomedicine, which is followed by wild edible plants category or WEPs (112 species), Non timber forest products or NTFP (32 species), 22 species as veterinary plants, 18 species for magico-religious and conservation purposes, 15 as miscellaneous purposes, 10 as poison, 5 as fodder, 5 as narcotic and 2 as poison indicator.

It has been noticed that 215 plant species are used in 472 ethnomedicinal uses by the Lodhas

of West Bengal. Among the 472 ethnomedicinal uses, 28% are used as monoherbal preparation, i.e. single plant is involved in one herbal preparation and 72% are of polyherbal preparations where more than one plant is used in a single ethnomedicinal preparation. As far as the method of preparation and mode of uses are concerned, 139 preparations are used as paste, 105 as powder, 46 as fresh and raw, 50 as decoction, 8 as soaked in water, 48 as juice and sap, 27 as boiled, 10 as cooked, 12 as roasted, 6 as oil, 1 as ash, 4 as warm, 3 as for chewing, 2 as fried and 3 as burnt to cure the disorders. Most of the remedies are administered orally (64%) which are followed by topical (35%) administration and inhalation (1%). During preparation of remedies, some adjuvants like milk, honey, crystal sugar or '*michhri*', mustard oil, rice powder or '*chawl guro*', rice washed water or '*chawl dhua jal*',

egg, rice beer or 'handia', country liquor, coconut oil, coconut water, *Papaver somniferum* or 'afim' are commonly added. Dosages and duration of remedies may vary according to the severity of ailments and age of the patients. It has been observed that for 472 ethnomedicinal uses, leaves are used by the *Lodhas* in highest number (145 in number), followed by root (88), fruit (79), bark (44), whole plant (36), latex (21), stem (12), seed (11), tuber (18), flower (8), rhizome (17), stem sap (2) and thorn (2). Here, 215 ethnomedicinal plant species are used in the preparation of 472 formulations which are used in curing about 23 categories of diseases/ailments like Dermatological disorder (53 species), Gynecological disorder (49 species), Muscular-skeletal system disorder (44 species), Gastro-intestinal and digestive system disorder (60 species), ENT and respiratory disorder (26 species), Diabetes (21 species), Urinary disorder (8 species), Male disorder (7 species), Hypertension (3 species), Hair care (9 species), Fever and Pain (32 species), Dog bite (5 species), Snake and scorpion bite (23 species), Insect bite (2 species), Dental care (9 species), Nervous system disorder (2 species), Malaria and jaundice (8 species), Chicken pox (1 species), Piles (6 species), Cancer (2 species), Physical Weakness (2 species), Obesity (5 species) and Pediatric care (5 species).

It is noticed that about 101 plant species along with their 487 number of ethnobotanical uses are reported here for the first time from the *Lodhas* of West Bengal. Nearly 320 of the ethnomedicinal uses are also found new, as they have not been recorded earlier in the reports on ethnobotany of *Lodhas* from West Bengal as well as India (Jain, 1991; Pal and Jain, 1989; Pant et al., 1993; Rai Chaudhuri and Pal, 1975; Sarkhel, 2014). Some of the uses of medicinal plants by the *Lodhas* found new are: *Baliospermum solanifolium*, *Cheilocostus speciosus*, *Desmostachya bipinnata*, *Ehretia laevis*, *Cannabis sativa* are used in gynecological treatment; *Alstonia scholaris*, *Artocarpus heterophyllus*, *Capparis zeylanica*, *Ehretia laevis* are reported for skeletal and muscular diseases; *Gouania microcarpa* for

ear pain; *Cajanus scarabaeoides* helps to quit smoke; *Cleistanthus collinus*, *Salacia chinensis* for hair growth and treatment of dandruff, to get rid of lice; *Mimosa rubicaulis* used in fever and *Madhuca indica* as tranquilizer. Out of 215 medicinal plants used by the *Lodhas*, very few of plant species have been studied for the scientific validation of their therapeutic properties. It is the need of the hour to study this vast medicinal plant diversity of *Lodha* medicine systematically and to validate their ethnomedicinal claims.

A number of traditional practices for conservation of plant resources have been noticed among the *Lodha* tribe of West Bengal. Like other tribal communities, *Lodha* community in West Bengal has the traditional belief that plants are sacred in nature. Near the village premises or in the forests, some areas covered with plants are considered by the *Lodhas* as sacred groves and are protected due to their religious faith or taboos. These plants and forest areas are protected since ages and utilized only for socio-cultural and religious practices like worship, death ceremonies and other temple rituals. The plants like *Symplocos racemosus*, *Baliospermum solanifolium*, *Vanda tessellata* etc., are worshiped as God by them and are prohibited from being destroyed.

They have immense knowledge regarding the time and seasons of collection of medicinal plants or plant parts. In respect of the time and seasons, some restrictions are there for collection of plants. *Alstonia scholaris*, *Anacardium occidentale* and some other medicinal plants are not being collected during their flowering seasons. *Byttneria herbacea*, *Aristolochia indica*, *Catharanthus roseus* are most preferably collected in the morning. Diurnal as well as seasonal restrictions in collection or harvest of such medicinal plants ensure their conservation to some extent.

During harvest of the underground parts of some useful parts, some portions of their root, tubers, rhizomes, etc., are left underground by the *Lodha* people as vegetative propagules for next growing seasons. In this way, important wild plant species like different species of *Dioscorea*,

Smilax zeylanica, etc., are conserved. Moreover, underground parts of *Curcuma caesia*, *Curcuma aromaticum*, *Euphorbia fusiformis* are kept in cool places of the house for cultivation in next season and thus the germplasm of all these important plant species is being maintained year after year.

For certain valid reasons access to the forest resources by the Lodha people is very limited. Hence, many of this forest dwelling tribes have opted for agriculture as an alternative means of their livelihood. Generally, cultivation of a few rice varieties is encouraged among the farmers considering their high yield. It is interesting to note that in spite of their poor yield, few numbers of landraces of many crops including rice are being cultivated by the Lodhas even now. Two rice land races namely “*Badsha vog*” and “*Mota hajar dash*” are cultivated by them in Paschim Medinipur. In this way, germplasm diversity of landraces of certain crops is being maintained.

Establishment of kitchen garden in their house premises is a common practice among the *Lodhas*. Many important plant species are planted and maintained round the year in their kitchen gardens, so they can use the plants whenever required. Mostly, herbaceous plants are planted in the kitchen gardens like *Cannabis sativa*, *Curcuma caesia*, *Carica papaya*, *Piper betle*, etc. Moreover, *Morus indica*, *Pterospermum acerifolium*, *Diospyros malabarica*, *Azadirachta indica*, *Litsea glutinosa*, different *Ficus* species and many other plants of utmost importance are also planted by the Lodhas in the village premises and nearby houses to conserve the phyto-resources.

4. Conclusion

From this study, it is clearly understood that the Lodhas of West Bengal have very rich traditional knowledge regarding utilization and

conservation of the phyto resources. About 250 species of angiosperms and pteridophytes are used by the people of *Lodha* tribe in the 12 numbers of use-categories which basically highlight a large body of information regarding ethnobotanical knowledge of this primitive tribe on locally available phyto-resources and its sustainable uses. Further studies have to be conducted to document more information regarding the traditional knowledge of this tribal group attached with the plant resources from other states of India. Finally, an inventory of the Ethnobotany of *Lodha* tribe of India can be prepared compiling all the state level information documented. The information on ethnobotany of the *Lodhas* of West Bengal documented in this study will also protect the IPR of this tribe. Further, scientific validation of ethnobotanical as well as ethnomedicinal claims need to be carried out through phytochemical and pharmacological studies for the development of novel compounds. More attention has to be paid for the conservation of important plant species used by *Lodhas*. Combination of both modern conservation strategies and traditional conservation practices is needed to frame the conservation strategy for protection of the vast phyto-resources used by this vulnerable tribe.

Acknowledgements

We are thankful to the Director, Botanical Survey of India for financial support. We also acknowledge Department of Botany (UGC-DRS-SAP & DST-FIST sponsored), Visva Bharati, Santiniketan; P.C.C.F, West Bengal; Head of Office, Central National Herbarium (CAL); Director, Cultural Research Institute, Kolkata; Mr Balai Nayek, Secretary, *Lodha Savar* Kalyan Samity, Paschim Medinipur, West Bengal; Dr. Amalesh Mishra, *Paribesh Unnayan Parishad* and other local NGOs for their valuable support

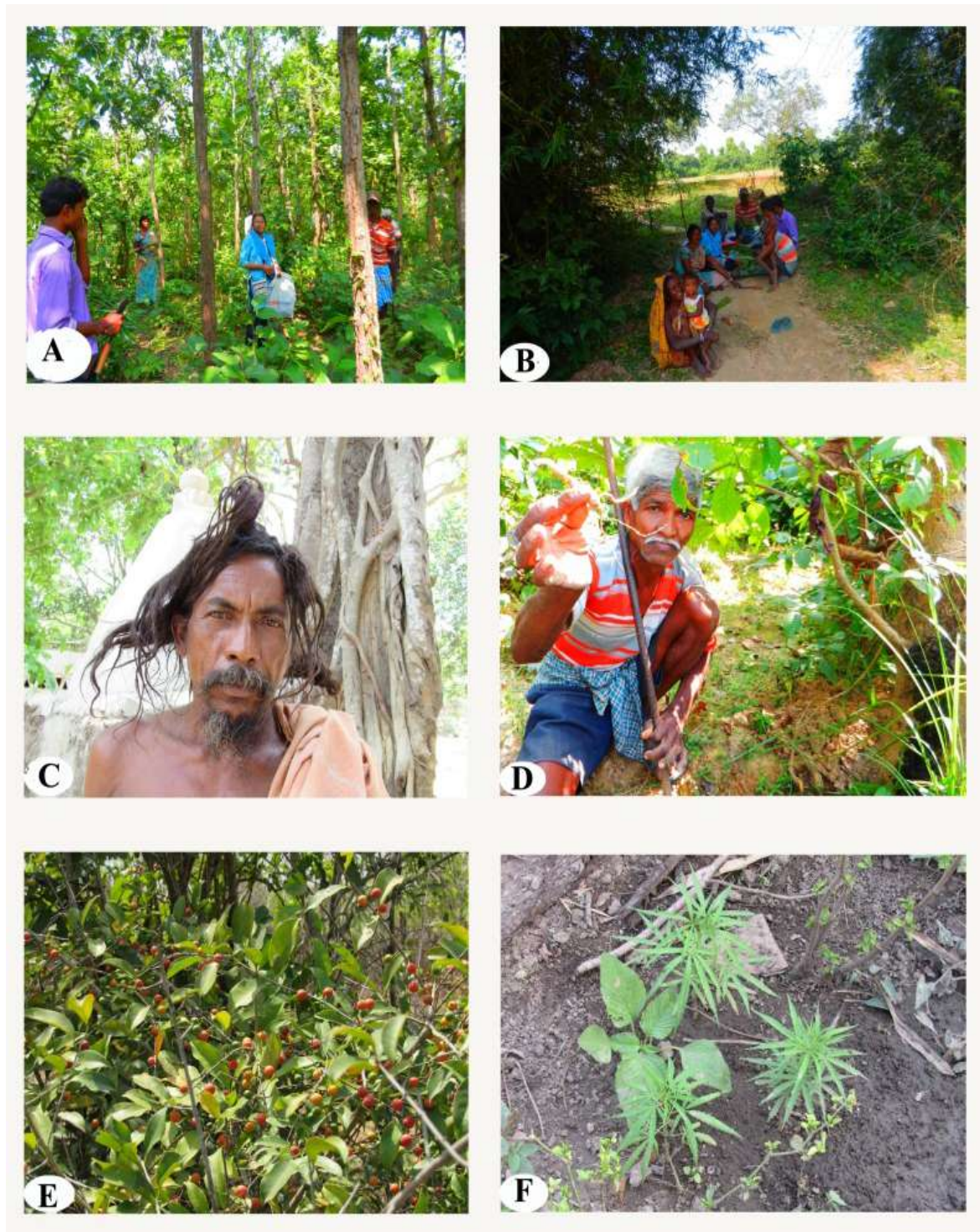


Fig. 2. Phytodiversity used by the *Lodha* tribe, West Bengal: **A.** Collection of plant specimens with the tribal; **B.** Interview taken among the tribal; **C.** Medicine man and priest of Tapoban, Paschim Medinipur; **D.** Medicine man, Gaya Prasad Bhakta, giving information about the roots of *Curculigo orchoides*; **E.** *Salacia chinensis*, fruits used in hair care; **F.** *Cannabis sativa*, leaf used in the treatment of dysmenorrhea

References

- Anonymous 1997. Flora of West Bengal. Botanical Survey of India, Calcutta, India. 1.
- Bhakat R K and Pandit P K 2004. An inventory of medicinal plants of some sacred groves of Purulia district, West Bengal. *Ind Forester*.130(1): 37-44.
- Bhatt S C and Bhargava G K 2006. Land and People of Indian States and Union, Kalpaz Publication, New Delhi, Vol 26.
- Bhowmick P K 1994. The Lodhas of West Bengal: A Socio Economic Study, Puthi Pustak, Calcutta, India.
- Census of India 2011. http://www.censusindia.gov.in/2011census/population_enumeration.html [Accessed, 1.08.2018]
- Chaudhury S, Singh H and Bharati K A 2017. Quantitative analyses on ethnogynecological remedies used by Lodhas of Paschim Medinipur district, West Bengal. *Ind J Tradi Knowledge*. 16(2): 325-332.
- Chaudhury S, Rahaman C H and Singh H 2016. Some ethnozoological uses of Birhor tribe of West Bengal, India. *J Trad & Folklore Practices*. 2, 3, 4 (1): 33-42.
- Das N and Chattopadhyay R N 2001. Nutritional evaluation of edible non-timber forest produces-a case study in South-West Bengal. *Ind Forester*. 127(11): 1232-1238.
- Das U and Rahaman C H 2014. An observation on the phytotherapeutic uses of plants by the tribal People of some forest areas in Birbhum and Burdwan districts, West Bengal, India. *J App Pharm Sci*. 4 (04): 72-78.
- Ghosh R and Sarkhel S 2013. Ethnomedicinal practices of the tribal communities in Paschim Medinipur district, West Bengal. *Asian J Exp Biol Sci*. 4(4): 555-560.
- Jain S K 1991. Dictionary of Indian Folk medicine and Ethnobotany, Deep Publishers, New Delhi, India.
- Martin G J 2008. *Ethnobotany: A Methods Manual*. Earthscan Publishing Limited, London, United Kingdom.
- Mitra S and Mukherjee S K 2009. Some abortifacient plants used by the tribal people of West Bengal. *Natural Pro Rad*. 8 (2):167-171.
- Mondal S and Rahaman C H 2012. Medicinal plants used by the tribal people of Birbhum district of West Bengal and Dumka district of Jharkhand in India. *Ind J Tradi Knowledge*. 11(4): 674-679.
- Mukherjee A and Bauri T 2011. Indigenous knowledge about the use of non-timber phytoresources as documented from forest areas under Durgapur forest range, Burdwan district. *The Ecoscan*. 1: 59- 62.
- Pal D C and Jain S K 1989. Notes on Lodha medicine in Midnapur District, West Bengal, India. *Econ Bot*. 43(4): 464-470.
- Pal D C and Jain S K 1998. *Tribal Medicine*. Naya Prokash, Calcutta, India.
- Pant N C, Pandey D K, Banerjee S K and Mishra T K 1993. Some common ethnobotanical practices of Lodha community of Midnapore, W. Bengal. *J Trop Forestry*.9(3): 215-218.
- Particularly Vulnerable Tribal Group- Ministry of Tribal Affairs. 2012. Available from <http://tribal.nic.in/Content/Particularly%20Vulnerable%20Tribal%20Group.aspx>.
- Paul T K, Lakshminarsimhan P, Chowdhery H J, Dash S S and Singh P 2015. Flora of West Bengal. Botanical Survey of India, Ministry of Environment, Forests & Climate Change, Kolkata, India. 2.
- Rahaman C H 2012. Ethnomedicinal plant resources of Birbhum district, West Bengal – A treasure trove for Bioprospecting. In: *Biology of Plants and Microbes*. Bose D. Roy S. (eds). Levant Books, Kolkata. pp. 211-233.
- Rahaman C H and Das U 2012. Traditional herbal remedies for gastrointestinal problems practised among the tribal and other communities of Birbhum district, West Bengal, India. *Biospectra*. 7(2): 133-142.
- Rahaman C H and Karmakar S 2015. Ethnomedicine of Santal tribe living around Susunia hill of Bankura district, West Bengal, India: The quantitative Approach. *J App Pharm Sci*. 5(2):127-136.
- Rahaman C H and Pradhan B 2011. A study on the ethnomedicinal uses of plants by the tribal people of Birbhum district, West Bengal. *J Econ Taxon Bot*. 35 (3): 529 - 534.
- Rahaman C H and Saha S 2011. Traditional phytotherapies for gynaecological, urino-genital and other related problems practiced among the rural people of Bolpur subdivision under Birbhum District, West Bengal, India. *Columban J Life Sci*. 12(1-2): 73-78.
- Rai Chaudhuri H N and Pal D C 1975. Notes on magico - religious belief about plants among Lodhas of Midnapore, W.B. *Vanyajati*. 13: 210-222.
- Rai Chaudhuri H N and Pal D C 1978. Preliminary observation on ethnobotany of Midnapore districts. *W.B. India. Indian Mus Bull*.14(1-2): 71-73.
- Sarkhel S 2014. Ethnogynaecological uses of plants by the Lodha community at Paschim Medinipur district, West Bengal. *World J Alternative Med*. 1(1):01-04.
- The Plant List 2010. Available from: <http://www.theplantlist.org>. [Accessed 27 November, 2017].
- Thomas E, Vandebroek I and Damme PV 2007. What works in the field? A comparison of different interviewing methods in ethnobotany with special reference to the use of photographs. *Econ Bot*. 61(4): 376-384.

Table 1. Inventory of the phyto-diversity used by the Lodha tribe of West Bengal, India

Sl. No.	Scientific name	Family	Local name	Field number	Use category#	Ethnobotanical uses	Parts used	Mode of preparation (ethno medicine)	Mode of administration (ethno medicine)
1	<i>Abrus precatorius</i> L.	Leguminosae	Runj	CBL.36038	EM	1. Leucorrhoea 2. Ear pain* 3. Tonsillitis* 4. Skin disease*	Root Fruit Fruit Fruit, Bark	Powder Powder Powder Powder	Oral Oral Oral Topical
2	<i>Abutilon indicum</i> (L.) Sweet	Malvaceae	Jakhai	CBL.36785	EM	5. Diarrhoea* 6. Head ache	Root Leaf	Decoction Paste	Oral Topical
3	<i>Acacia auriculiformis</i> Benth.	Leguminosae	Akash mani	CBL.36064	NTPP, MIS	7. Fuel (Wood)* 8. Fuel (Leaf)* 9. Fencing* 10. Soil erosion* 11. Timber*	Stem Leaf Stem Whole plant Stem		
4	<i>Acacia nilotica</i> (L.) Delle	Leguminosae	Babla	CBL.38580	EM, MIS	12. Skin care 13. Dental plaque* 14. Tooth brush*	Leaf Bark Stem	Paste Powder	Topical Topical
5	<i>Acanthus ilicifolius</i> L.	Acanthaceae	Bhalia banda	CBL.39807	EM,MR	15. Abortion* 16. Asthma* 17. Magico-religious	Root Root Leaf	Paste Powder	Oral Oral
6	<i>Achyranthes aspera</i> L.	Amaranthaceae	Chini sagar	CBL.36003	EM, WEP,MR	18. Thirst remove* 19. Dog bite 20. Abortion 21. Diarrhoea 22. Contraceptive 23. Scorpion bite* 24. Edible* 25. Magico-religious	Root Root Root Leaf Root Root Leaf Root	Juice Paste Paste Decoction Ash Paste	Oral Oral Oral Oral Oral Oral
7	<i>Acmella paniculata</i> (Wall. ex DC.) R.K.Jansen	Compositae	Holud ful	CBL.36727	EM	26. Wound healing*	Leaf	Paste	Topical
8	<i>Acorus calamus</i> L.	Acoraceae	Suragoto	CBL.38529	EM	27. Fever* 28. Head ache* 29. Rheumatism* 30. Diarrhoea*	Rhizome Rhizome Leaf Rhizome	Paste Paste Boil Powder	Oral Topical Topical Oral

9	<i>Aeginetia indica</i> L.	Orobanchaceae	Golapi	CBL 37838	EM,N,TFP	31. Poor lactation* 32. Diabetes*	Bark Whole plant	Powder Powder	Oral Oral
10	<i>Aegle marmelos</i> (L.) Corrêa	Rutaceae	Bel	CBL 36059	EM,WEP,C	33. Constipation 34. Intestinal worm* 35. Edible 36. Sacred purpose	Fruit Fruit Fruit Fruit	Powder Raw	Oral Oral
11	<i>Aerva lanata</i> (L.) Juss.	Amaranthaceae	Kunda vuturi	CBL 36039	EM	37. Dysmenorrhea 38. Infertility 39. Kidney stone* 40. Urinary problem*	Root Root Whole plant Whole plant	Powder Powder Paste Paste	Oral Oral Oral Oral
12	<i>Albizia saman</i> (Jacq.) Merr.	Leguminosae	Sirish	CBL 36776	EM	41. Burn	Bark	Paste	Topical
13	<i>Albizia lebeck</i> (L.) Benth.	Leguminosae	Khirish	CBL 38573	EM,WEP,NTF- P,MIS	42. Piles* 43. Skin disease* 44. Edible* 45. Timber* 46. Fuel*	Bark Bark Leaf Stem Stem	Boil Paste	Topical Topical
14	<i>Alstonia scholaris</i> (L.) R. Br.	Apocynaceae	Chatim	CBL 36061	EM,V,MIR	47. Rheumatism* 48. Snake bite* 49. Magico-religious* 50. Veterinary*	Latex Bark Whole plant Bark, Latex	Raw Paste	Topical Topical
15	<i>Alternanthera sessilis</i> (L.) R.Br. ex DC.	Amaranthaceae	Salanti	CBL 38558	EM,WEP	51. Diarrhoea* 52. Health tonic* 53. Wild edible*	Whole plant Leaf Leaf	Paste Juice	Oral Oral
16	<i>Alysicarpus vaginalis</i> (L.) DC.	Leguminosae	Patra hami	CBL 36703	WEP,V	54. Veterinary* 55. Wild edible*	Root Whole plant	Paste	Oral
17	<i>Amaranthus spinosus</i> L.	Amaranthaceae	Kanta marich	CBL 36017	EM, WEP	56. Constipation 57. Menorrhagia 58. Wild edible*	Whole plant Whole plant Whole plant	Cooking Decoction	Oral Oral
18	<i>Amaranthus viridis</i> L.	Amaranthaceae	Phulka	CBL 37853	EM, WEP	59. Constipation* 60. Abortion* 61. Wild edible*	Leaf Root Whole plant	Cooking Raw	Oral Oral
19	<i>Amorphophallus sylvaticus</i> (Roxb.) Kunth	Araceae	Buno ol	CBL 36037	WEP	62. Rheumatism 63. Wild edible	Rhizome Rhizome	Paste	Topical
20	<i>Ampelocissus latifolia</i> (Roxb.) Planch.	Vitaceae	Jongli angur	CBL 38570	EM, WEP	64. Insect bite* 65. Wild edible*	Leaf Fruit	Paste	Topical

21	<i>Anacardium occidentale</i> L.	Anacardiaceae	Vela	CBL.36749	EM, WEP, V	66. Skin care* 67. Edible 68. Veterinary*	Latex Fruit Seed	Raw	Topical
22	<i>Andrographis glandulosa</i> Nees	Acanthaceae	Bisalyo	CBL.37849	EM	69. Fever* 70. Scorpion bite* 71. Snake bite* 72. Leucorrhoea* 73. Skin care*	Root Leaf Leaf Leaf Leaf	Decoction Paste Paste Decoction Paste	Oral Topical Topical Oral Topical
23	<i>Andrographis paniculata</i> (Burm. f.) Nees	Acanthaceae	Kal megh	CBL.36043	EM, WEP, V	74. Skin infection* 75. Microbial infection for infants 76. Cold and cough* 77. Stomach pain 78. Wild edible 79. Veterinary*	Leaf Leaf Whole plant Leaf Leaf Leaf	Paste Raw Decoction Juice Cooking	Topical Topical Oral Oral Oral
24	<i>Anisomeles indica</i> (L.) Kuntze	Lamiaceae	Gobra	CBL.36791	EM	80. Muscular pain* 81. Fever* 82. Snake and scorpion bite*	Whole plant Leaf Root	Paste Juice Powder	Topical Oral Oral
25	<i>Annona squamosa</i> L.	Annonaceae	Aata	CBL.38583	EM, WEP	83. Lice treatment* 84. Hair care* 85. Wild edible* 86. Magico-religious* 87. Veterinary*	Fruit Seed Fruit Leaf Fruit	Raw Powder	Topical Topical
26	<i>Antidesma ghaesembilla</i> Gaertn.	Phyllanthaceae	Bench kul	CBL.36024	WEP	88. Wild edible*	Fruit		
27	<i>Aristida setacea</i> Retz.	Poaceae	Khopor khachi	CBL.36090	EM, NTFP	89. Constipation* 90. Broom Making*	Leaf Leaf	Powder	Oral
28	<i>Aristolochia indica</i> L.	Aristolochiaceae	Iswarmul	CBL.36001	EM, MR	91. Dysmenorrhoea* 92. Snake repellent 93. Snake and scorpion bite 94. Diarrhoea/blood dysentery 95. Leucorrhoea 96. Abortion 97. Skin care* 98. Postpartum care* 99. Convulsion* 100. Magico-religious	Leaf Root Leaf Whole plant Root Root Bark Leaf Root Whole plant	Raw Dried and intact Paste Decoction Powder Chew Paste Decoction Powder	Oral Topical Oral Oral Oral Oral Oral Oral Oral

29	<i>Artocarpus heterophyllus</i> Lam.	Moraceae	Kanthal	CBL.36010	EM	101. Skin care* 102. Rheumatism* 103. Joint pain*	Latex Leaf Latex	Raw Raw Boil	Topical Topical Topical
30	<i>Asparagus racemosus</i> Willd.	Asparagaceae	Swet mul	CBL.36019	EM	104. Leucorrhoea (Monoherbal) 105. Leucorrhoea (Polyherbal) 106. Body cooling* 107. Infertility 108. Dysmenorrhea	Leaf Root Tuber Root Root	Raw Powder Juice Powder Powder	Oral Oral Oral Oral Oral
31	<i>Azadirachta indica</i> A. Juss.	Meliaceae	Neem	CBL.36008	EM,WEP,MR, PIB,C	109. Cosmetics 110. Skin care 111. Rheumatism* 112. Fever 113. Lice kill 114. Hair care 115. Dandruff care 116. Edible 117. Beverage* 118. Insect repellent 119. Magico religious 120. Sacred plant* 121. Poison indicator*	Fruit Seed Leaf Root Fruit Fruit Leaf Leaf, Fruit Leaf Leaf Whole plant Whole plant Leaf	Paste Oil Paste Decoction Paste Oil Boil	Topical Topical Topical Oral Topical Topical Topical
32	<i>Bacopa monnieri</i> (L.) Wettst.	Plantaginaceae	Bramhi	CBL.39818	EM,WEP	122. Edible and health strength*	Whole plant		
33	<i>Baliospermum solanifolium</i> (Burm.) Suresh	Euphorbiaceae	Kedar sindur	CBL.36037	WEP, C	123. Leucorrhoea* 124. Snake bite* 125. Intestinal worm* 126. Diarrhoea* 127. Sacred grove*	Root Root Root Bark Whole plant	Powder Decoction Extraction Decoction	Oral Oral Oral Oral
34	<i>Barleria cristata</i> L.	Acanthaceae	Bakar	CBL.36060	EM, B	128. Foot care* 129. Beverage*	Leaf Leaf	Juice	Topical
35	<i>Barleria prionitis</i> L.	Acanthaceae	Bakar	CBL.37851	B	130. Beverage*	Leaf		
36	<i>Bauhinia purpurea</i> L.	Leguminosae	Sapidanka	CBL.39801	WEP	131. Edible*	Leaf		
37	<i>Bauhinia vahlii</i> Wight & Arn.	Leguminosae	Chihor	CBL.36743	NTPP	132. Edible* 133. Rope*	Seed Leaf		

38	<i>Blumea lacera</i> (Burm.f.) DC.	Compositae	Koksimia	CBL.39810	EM	134. Diarrhoea* 135. Tooth ache*	Root Root	Decoction Chew	Oral Oral
39	<i>Blumea oxyodon</i> DC.	Compositae	Mayurchuri	CBL.37841	EM	136. Ear pain*	Stem	Decoction	Topical
40	<i>Boerhavia diffusa</i> L.	Nyctaginaceae	Kalke sak	CBL.36016	EM,WEP,NTP,V	137. Muscular pain 138. Enlargement of liver and spleen 139. Edible 140. Veterinary 141. Handicraft	Fruit Leaf Whole plant Leaf Stem	Paste Paste	Topical Oral
41	<i>Borassus flabellifer</i> L.	Arecaceae	Tal	CBL.39813	NTP,WEP	142. Rope* 143. Edible	Leaf Fruit		
42	<i>Boswellia serrata</i> Roxb. ex Colebr.	Bursaceae	Bon gach	CBL.36779	EM	144. Wound healing 145. Skin care 146. Diabetes 147. Rheumatism 148. Hair growth	Latex Bark Latex Latex Latex	Boil Decoction Raw Raw Raw	Topical Topical Oral Oral Topical
43	<i>Bruguiera gymnorhiza</i> (L.) Lam.	Rhizophoraceae	Kankra	CBL.39816	F	149. Fodder*	Leaf		
44	<i>Buchanania cochinchinensis</i> (Lour.) M.R.Almeida	Anacardiaceae	Char kul	CBL.36014	EM,WEP	150. Diabetes* 151. Wound healing 152. Kidney stone 153. Rheumatism 154. Edible 155. Veterinary	Fruit Bark Seed Fruit Fruit Root	Raw Decoction Powder Boil	Oral Topical Oral Oral
45	<i>Bulbosylis barbata</i> (Rottb.) C.B.Clark	Cyperaceae	Choto mutha	CBL.38597	EM	156. Diarrhoea*	Whole plant	Decoction	Oral
46	<i>Butea monosperma</i> (Lam.) Taub.	Leguminosae	Palash	CBL.37869	EM	157. Menstrual problem* 158. Spermatorrhea*	Root Root	Powder Powder	Oral Oral
47	<i>Byttneria herbacea</i> Roxb.	Malvaceae	Kamraj	CBL.37827	EM	159. Leucorrhoea* 160. Rheumatism* 161. Diabetes*	Root Root Root	Powder Paste Decoction	Oral Topical Oral
48	<i>Cajanus cajan</i> (L.) Millsp.	Leguminosae	Arhar	CBL.36724	EM,WEP	162. Poor lactation 163. Wound healing 164. Edible	Fruit Leaf Leaf, fruit	Paste Decoction	Oral Topical

49	<i>Cajanus scarabaeoides</i> (L.) Thouars	Leguminosae	Bonkurti	CBL.36709	EM,WEP,V	165. Kidney stone* 166. Quit smoking* 167. Edible* 168. Veterinary*	Fruit Whole plant Seed Fruit	Raw Burn	Oral Inhale
50	<i>Calotropis gigantea</i> (L.) Dryand	Asclepiadaceae	Akondo	CBL.36712	EM,V	169. Snake bite* 170. Old wounds 171. Leucorrhoea 172. Wound healing 173. Postpartum care* 174. Mumps* 175. Veterinary*	LateX LateX Root LateX Root Leaf LateX	Raw Raw Paste Raw Decoction Warm	Topical Topical Oral Topical Oral Topical
51	<i>Cannabis sativa</i> L.	Cannabaceae	Ganja	CBL.36781	EM,N	176. Dysmenorrhea* 177. Analgesic* 178. Fever* 179. Narcotic	Leaf Leaf Leaf Leaf	Powder Powder Juice	Oral Oral Oral
52	<i>Capparis zeylanica</i> L.	Capparaceae	Bagna	CBL.36068	EM,MIS	180. Rheumatism* 181. Small pox 182. Mosquito repellent*	Leaf Root Whole plant	Paste Powder	Topical Oral
53	<i>Capsicum annum</i> L.	Solanaceae	Top bai muruj	CBL.38533	V,WEP	183. Veterinary* 184. Edible	Fruit Fruit		
54	<i>Cardiospermum halicacabum</i> L.	Sapindaceae	Sibjhuli	CBL.36771	EM	185. Dysmenorrhea* 186. Diabetes* 187. Abortion	Fruit Leaf Root	Paste Juice Chew	Oral Oral Oral
55	<i>Carica papaya</i> L.	Caricaceae	Pepe	CBL.38514	EM,WEP	188. Indigestion/Gastritis* 189. Fever* 190. Edible	Fruit Fruit Fruit		
56	<i>Carissa spinarum</i> L.	Apocynaceae	Chini kul	CBL.36040	WEP	191. Diabetes* 192. Edible	Fruit Fruit	Raw	Oral
57	<i>Cassia fistula</i> L.	Leguminosae	Sonari	CBL.36055	EM	193. Leucorrhoea* 194. Constipation 195. Postpartum care* 196. Diabetes 197. Wound healing	Bark Fruit Bark Seed Stem	Powder Paste Powder Powder Decoction	Oral Oral Oral Oral Topical
58	<i>Catharanthus roseus</i> (L.) G. Don	Apocynaceae	Nayantara	CBL.38530	EM	198. Hypertension* 199. Snake bite* 200. Diabetes*	Leaf Leaf Leaf	Paste Juice Juice	Oral Oral Oral

59	<i>Catunaregam spinosa</i> (Thunb.) Tirveng.	Rubiaceae	Bhurur kul	CBL 36049	EM,WEP	201. Appetizer* 202. Diabetes* 203. Joint pain* 204. Edible*	Fruit Fruit Bark Fruit	Raw Raw Paste	Oral Oral Topical
60	<i>Cayratia japonica</i> (Thunb.) Gagnep.	Vitaceae	Moth	CBL 36049	EM,WEP	205. Bone fracture* 206. Fever* 207. Veterinary*	Whole plant Bark Root	Powder Decoction	Topical Oral
61	<i>Celastrus paniculatus</i> Willd.	Celastraceae	Kujri	CBL 37803	EM,WEP	208. Skin care 209. Rheumatism	Seed Seed	Oil Oil	Topical Topical
62	<i>Celosia argentea</i> L.	Amaranthaceae	Nehenga	CBL 36076	WEP	210. Edible*	Whole plant		
63	<i>Centella asiatica</i> (L.) Urb.	Apiaceae	Choto beng sag	CBL 38534	EM,WEP	211. Pneumonia* 212. Edible	Leaf Leaf	Juice	Oral
64	<i>Chelidonium speciosus</i> (J.Koenig)C.D.Specht	Costaceae	Keu alu	CBL 36046	EM,WEP,PI	213. Leucorrhoea* 214. Piles 215. Snake bite indicator* 216. Wild edible	Root Tuber Seed Tuber	Powder Paste Powder	Oral Oral Oral
65	<i>Chenopodium album</i> L.	Chenopodiaceae	Beto	CBL 37860	WEP	217. Wild edible	Whole plant		
66	<i>Chromolaena odorata</i> (L.) R.M.King & H.Rob.	Compositae	Hogla	CBL 37843	EM	218. Skin disease*	Leaf	Decoction	Topical
67	<i>Chrysopogon aciculatus</i> (Retz.) Trin.	Poaceae	Jul gunda	CBL 38578	EM,NTFP	219. Constipation* 220. Broom making*	Leaf Stem	Boil	Oral
68	<i>Chrysopogon zizanioides</i> (L.) Robery	Poaceae	Bena	CBL 36030	EM,F,MIS	221. Constipation* 222. Diarrhoea 223. Fodder* 224. Mat making* 225. Frying puffed rice*	Leaf Root Whole plant Whole plant Stem	Paste Paste	Oral Oral
69	<i>Cissampelos pareira</i> L.	Menispermaceae	Akon bindi	CBL 36057	EM,B	226. Leucorrhoea 227. Malaria 228. Dog bite* 229. Snake bite* 230. Beverage*	Root Root Root Root Root	Powder Decoction Powder Powder	Oral Oral Oral Oral

70	<i>Cissus quadrangularis</i> L.	Vitaceae	Har jora	CBL 36750	EM	231. Bone fracture (monoherbal) 232. Bone fracture (polyherbal)	Whole plant Whole plant	Paste Paste	Topical Topical
71	<i>Cleistanthus collinus</i> (Roxb.) Benth. ex Hook.f.	Phyllanthaceae	Bon Paras	CBL 36713	EM,P,MIS	233. Hair care* 234. Lice treatment* 235. Poison 236. Fish poison 237. Bio pesticide*	Leaf Leaf, fruit Fruit Fruit Leaf	Raw Paste Paste	Topical Topical
72	<i>Cleome ruitosperma</i> DC.	Cleomeaceae	Bon mung	CBL 36078	EM,WEP	238. Diabetes* 239. Edible*	Fruit Fruit	Roasted	Oral
73	<i>Cleome viscosa</i> L.	Cleomeaceae	Bon biri	CBL 38550	EM,WEP	240. Diabetes* 241. Edible*	Fruit Fruit	Roasted	Oral
74	<i>Clerodendrum infortunatum</i> L.	Lamiaceae	Vatkano	CBL 36042	EM,F	242. Intestinal worm* 243. Snake bite* 244. Fodder*	Latex Bark Whole plant	Raw Decoction	Oral Oral
75	<i>Coccinia grandis</i> (L.) Voigt	Cucurbitaceae	Kundri	CBL 36005	EM,WEP	245. Blood purifier* 246. Snake bite* 247. Diarrhoea* 248. Stomach pain* 249. Edible*	Leaf Root leaf Leaf Fruit	Juice Decoction Juice Juice	Oral Oral Oral Oral
76	<i>Colocasia esculenta</i> (L.) Schott	Araceae	Kochu	CBL 36035	EM,WEP	250. Rheumatism* 251. Skin burn* 252. Skin allergy* 253. Stomach ache* 254. Edible	Tuber Tuber Tuber Root Tuber	Paste Paste Paste Juice	Topical Topical Topical Oral
77	<i>Combretum decandrum</i> Jacq.	Combretaceae	Atanti	CBL 36738	EM,N,TFP	255. Eye infection 256. Malaria* 257. Artifact*	Sap Root Stem	Raw Powder	Topical Oral
78	<i>Commelina benghalensis</i> L.	Commelinaceae	Kana sag	CBL 37820	EM,WEP	258. Constipation* 259. Wild edible*	Leaf Leaf	Raw	Oral
79	<i>Corchorus capsularis</i> L.	Malvaceae	Pat	CBL 39817	N,TFP	260. Wild edible*	Leaf		
80	<i>Cordia dichotoma</i> G.Forst.	Boraginaceae	Bahar kuri	CBL 38602	WEP	261. Edible*	Fruit		

81	<i>Crinum viviparum</i> (Lam.) R.Ansari & V.J.Nair	Amaryllidaceae	Bon piyaj	CBL 36720	EM,WEP	262. Rheumatism* 263. Fever* 264. Edible*	Tuber Tuber Tuber	Paste Powder	Topical Oral
82	<i>Crinum asiaticum</i> L.	Amaryllidaceae	Horish	CBL 37848	EM	265. Piles*	Leaf	Warm	Topical
83	<i>Crotalaria prostrata</i> Willd.	Leguminosae	Chot pati	CBL 37833	EM,MR	266. Head ache* 267. Magico-religious*	Leaf Whole plant	Paste	Topical
84	<i>Croton bonplandianus</i> Baill.	Euphorbiaceae	Mon to	CBL 36086	EM,WEP	268. Wound-care* 269. Sinus problem* 270. Edible	Leaf Leaf Leaf	Paste Juice	Topical Inhale
85	<i>Curculigo orchoides</i> Gaertn.	Hypoxidaceae	Talmuli	CBL 36044	EM	271. Leucorrhoea 272. Insect bite* 273. Fever* 274. Ulcer 275. Snake bite 276. Gonorrhoea	Root Leaf Leaf Flower Root Whole plant	Powder Paste Decoction Powder Decoction Powder	Oral Topical Oral Oral Oral Oral
86	<i>Curcuma aromatica</i> Salisb.	Zingiberaceae	Bonholud	CBL 36705	EM,B	277. Rheumatism* 278. Fever* 279. Diarrhoea* 280. Beverage* 281. Rice beer	Rhizome Rhizome Rhizome Rhizome Rhizome	Paste Decoction Powder	Topical Oral Oral
87	<i>Curcuma caesia</i> Roxb.	Zingiberaceae	Kalo holud	CBL 37863	EM	282. Diabetes* 283. Rheumatism* 284. Skin burn* 285. Skin allergy* 286. Cancer* 287. Stomach ache* 288. Kidney stone*	Rhizome Rhizome Rhizome Rhizome Rhizome Rhizome	Powder Paste Paste Paste Paste Juice Raw	Oral Topical Topical Topical Topical Oral Oral
88	<i>Cuscuta reflexa</i> Roxb.	Convolvulaceae	Sona lata	CBL 36766	EM,MR,P	289. Hair care 290. Head ache 291. Magico-religious 292. Poison*	Whole plant Whole plant Whole plant Whole plant	Paste Paste	Topical Topical
89	<i>Cyanthillium cinereum</i> (L.) H.Rob.	Compositae	Dudhchirka	CBL 36002	EM,WEP	293. Dysentery 294. Wild edible	Leaf Leaf	Juice	Oral
90	<i>Cynodon dactylon</i> (L.) Pers.	Poaceae	Durba	CBL 39808	EM,C	295. Kidney stone* 296. Sacred plant*	Whole plant Whole plant	Decoction	Oral

91	<i>Cyperus compressus</i> L.	Cyperaceae	Boro mutha	CBL 37814	EM	297. Quit smoking* 298. Diarrhoea *	Leaf Leaf	Burn Decoction	Inhale Oral
92	<i>Cyperus exaltatus</i> Retz.	Cyperaceae	Nol	CBL 39812	NTFP	299. Mat making*	Leaf		
93	<i>Cyperus malaccensis</i> Lam.	Cyperaceae	Madur	CBL 39811	NTFP	300. Mat making*	Leaf		
94	<i>Datura metel</i> L.	Solanaceae	Dhutro	CBL 37822	EM,P,C	301. Skin allergy* 302. Skin burn* 303. Ear pain* 304. Rheumatism 305. Contraceptive* 306. Snake bite* 307. Poison 308. Socio-religious and sacred plant	Fruit Fruit Fruit Fruit Fruit Fruit Fruit Fruit	Boil Boil Fried Boil Powder Powder	Topical Topical Topical Topical Oral Oral
95	<i>Dendrocalamus strictus</i> (Roxb.) Nees	Poaceae	Bans	CBL 36005	WEP, MR,NTFP	309. Edible 310. Magico-religious 311. Fencing* 312. Fuel* 313. House making* 314. Fishing*	Stem Flower Stem Stem Stem Stem		
96	<i>Desmodium pulcherrimum</i> Shuttlew. ex Griseb.	Leguminosae	Kanta sikar	CBL 36074	EM,WEP	315. Dog bite * 316. Edible	Seed Seed	Paste	Oral
97	<i>Desmostachya bipinnata</i> (L.) Stapf	Poaceae	Kush ghas	CBL 36027	EM,C	317. Leucorrhoea* 318. Hindu ceremonies	Root Whole plant	Powder	Oral
98	<i>Dichanthium caricosum</i> (L.) A.Camus	Poaceae	Khoran khachi	CBL 36797	EM,NTFP	319. Constipation* 320. Leucorrhoea* 321. Broom*	Leaf Root Leaf	Powder Powder	Oral Oral
99	<i>Dillenia pentagyna</i> Roxb.	Dilleniaceae	Bonchalta	CBL 36092	WEP	322. Edible	Fruit		
100	<i>Dioscorea alata</i> L.	Dioscoreaceae	chupri alu	CBL 37855	EM,WEP	323. Diabetes* 324. Wild edible	Tuber Tuber	Cooking	Oral
101	<i>Dioscorea bulbifera</i> L.	Dioscoreaceae	Pita alu	CBL 36065	EM,WEP	325. Diabetes* 326. Rheumatism* 327. Wild edible	Tuber Tuber Tuber	Powder Boil	Oral Topical

102	<i>Dioscorea glabra</i> Roxb.	Dioscoreaceae	Pan alu	CBL.36004	EM,WEP	328. Wound healing 329. Wild edible	Tuber Tuber	Paste	Topical
103	<i>Dioscorea belophylla</i> (Prain) Voigt ex Haines	Dioscoreaceae	Rannar	CBL.38553	WEP	330. Edible	Tuber		
104	<i>Dioscorea deltoidea</i> Wall. ex Griseb.	Dioscoreaceae	Kham alu	CBL.38572	WEP	331. Edible	Tuber		
105	<i>Dioscorea esculenta</i> (Lour.) Burkill	Dioscoreaceae	churka	CBL.37810	WEP	332. Edible	Tuber		
106	<i>Dioscorea hamiltonii</i> Hook.f.	Dioscoreaceae	Mani alu	CBL.38552	WEP	333. Edible	Tuber		
107	<i>Dioscorea hispida</i> Dennst.	Dioscoreaceae	Baia	CBL.38554	EM,WEP	334. Rheumatism* 335. Edible	Tuber Tuber	Paste	Topical
108	<i>Dioscorea pentaphylla</i> L.	Dioscoreaceae	Baola	CBL.37809	EM,WEP	336. Skin care* 337. Edible	Leaf Tuber	Paste	Topical
109	<i>Dioscorea tomentosa</i> J.Koenig ex Spreng.	Dioscoreaceae	Dhan alu	CBL.36716	WEP	338. Edible	Tuber		
110	<i>Diospyros malabarica</i> (Desr.) Kostel.	Ebenaceae	Gab	CBL.39819	EM,WEP	339. Diarrhoea* 340. Edible	Bark Fruit	Decoction	Oral
111	<i>Diospyros melanoxylon</i> Roxb.	Ebenaceae	Kendu	CBL.36072	EM,WEP,N	341. Scorpion bite* 342. Edible 343. Narcotic	Leaf Fruit Leaf	Paste	Topical
112	<i>Diospyros montana</i> Roxb.	Ebenaceae	Kalti	CBL.36089	EM,N	344. Scorpion bite* 345. Narcotic	Leaf Fruit Leaf	Paste	Topical
113	<i>Diplazium esculentum</i> (Retz.) Sw.	Athyriaceae	Dheki	CBL.38509	EM,WEP	346. Constipation 347. Edible*	Leaf Leaf	Cooking	Oral
114	<i>Drymaria cordata</i> (L.) Willd. ex Schult.	Caryophyllaceae	Chot poti	CBL.38508	EM,WEP	348. Head ache 349. Cold and cough 350. Edible	Leaf Leaf Leaf, stem	Paste Paste	Inhale Inhale

115	<i>Eclipta prostrata</i> (L.) L.	Compositae	Kesutto	CBL 36031	EM	351. Hair care 352. Lice kill 353. Skin eruption 354. Scorpion bite 355. Diarrhoea* 356. Gastritis*	Leaf Fruit Leaf Leaf Root Leaf	Paste Paste Paste Juice Decoction Paste	Topical Topical Topical Topical Oral Oral
116	<i>Ehretia laevis</i> Roxb.	Boraginaceae	Bon kanthal	CBL 36754	EM,WEP	357. Leucorrhoea* 358. Edible	Fruit Fruit	Soaked	Oral
117	<i>Emilia sonchifolia</i> (L.) DC. ex DC	Compositae	Ghora ghas	CBL 37840	EM	359. Ear infection*	Leaf	Juice	Topical
118	<i>Eragrostis amabilis</i> (L.) Wight & Arn.	Poaceae	Kharankhaachi	CBL 36070	NTPP,F	360. Broom making* 361. Fodder*	Leaf Whole plant		
119	<i>Eragrostis coarctata</i> Stapf	Poaceae	Khoran khachi	CBL 36796	NTPP	362. Broom making* 363. Rope*	Leaf Leaf		
120	<i>Eriocaulon heterolepis</i> Steud.	Eriocaulaceae	Dobar gach	CBL 36793	MIS	364. Rice field indicator*	Whole plant		
121	<i>Eulaliopsis binata</i> (Retz.) C.E.Hubb.	Poaceae	Babui ghas	CBL 36047	NTPP	365. Basket making*	Leaf		
122	<i>Eupatorium album</i> L.	Compositae	Hurhure	CBL 36746	EM,WEP,NTPP	366. Leucorrhoea* 367. Edible* 368. Fuel*	Fruit Fruit Whole plant	Soaked	Oral
123	<i>Euphorbia hirta</i> L.	Euphorbiaceae	Bali sag	CBL 38583	EM,WEP	369. Pneumonia* 370. Edible	Leaf Leaf	Cooking	Oral
124	<i>Euphorbia fusiformis</i> Buch.-Ham. ex D.Don	Euphorbiaceae	Dudh mugra	CBL 36721	EM	371. Poor lactation* 372. Diarrhoea*	Tuber Tuber	Paste Juice	Oral Oral
125	<i>Evolvulus alsinoides</i> (L.) L.	Convolvulaceae	Musakani	CBL 36790	EM,WEP,B,V	373. Asthma* 374. Edible* 375. Beverage* 376. Veterinary*	Leaf Fruit Whole plant Whole plant	Decoction	Oral

126	<i>Ficus benghalensis</i> L.	Moraceae	Bot	CBL.36062	EM,WEP,F,V	377. Leucorrhoea (Mono-herbal) * 378. Leucorrhoea (Polyherbal) * 379. Spermatorrhea* 380. Contraceptive* 381. Edible 382. Fodder* 383. Veterinary*	Fruit Root Root Prop root Fruit Leaf Leaf	Soaked Powder Powder Decoction	Oral Oral Oral Oral
127	<i>Ficus hispida</i> L.f.	Moraceae	Godumur	CBL.38568	EM,WEP	384. Diarrhoea* 385. Edible*	Fruit Fruit	Juice	Oral
128	<i>Ficus racemosa</i> L.	Moraceae	Yoggo dumur	CBL.38547	EM,MR	386. Edible 387. Plate making	Fruit Leaf		
129	<i>Fimbristylis ovata</i> (Burm.f.) J.Kern	Cyperaceae	Mutha ghas	CBL.38598	EM	388. Diarrhoea* 389. Insect bite*	Leaf Leaf	Juice Paste	Oral Topical
130	<i>Flacourtia indica</i> (Burm.f.) Merr.	Salicaceae	Chini kul	CBL.36093	EM,WEP	390. Leucorrhoea* 391. Edible	Leaf fruit	Juice	Oral
131	<i>Flemingia chapper</i> Benth.	Leguminosae	Bon kurti	CBL.36702	WEP,V	392. Veterinary* 393. Edible	Flower Flower		
132	<i>Flemingia prostrata</i> Roxb.	Leguminosae	Nilkantha	CBL.36706	EM,MR,V	394. Skin care* 395. Throat problem* 396. Veterinary* 397. Magico-religious*	Fruit Root Seed Fruit	Raw Powder	Topical Oral
133	<i>Galinsoga parviflora</i> Cav.	Compositae	Tupi gach	CBL.38550	EM,WEP	398. Head ache* 399. Edible	Leaf Leaf	Paste	Topical
134	<i>Gardenia resinifera</i> Roth	Rubiaceae	Harinkhar	CBL.36768	EM	400. Intestinal worm* 401. Skin care* 402. Constipation*	Bark Latex Latex	Powder Raw Boil	Oral Topical Oral
135	<i>Geodorum densiflorum</i> (Lam.) Schltr.	Orchidaceae	Boro jangha	CBL.36722	EM,WEP	403. Rheumatism* 404. Edible	Tuber Tuber	Paste	Topical
136	<i>Glinus oppositifolius</i> (L.) Aug.DC.	Molluginaceae	Gima sag	CBL.36006	WEP	405. Wild edible	Whole plant		

137	<i>Gouania microcarpa</i> DC.	Rhamnaceae	Rai jhai	CBL 36054	EM,WEP	406. Ear pain* 407. Appetizer* 408. Edible*	Sap Leaf Leaf	Raw Raw	Topical Oral
138	<i>Gymnema sylvestris</i> (Retz.) R.Br. ex Sm.	Apocynaceae	Gurmun	CBL 37811	EM	409. Diabetes (Mono herbal) 410. Diabetes (Poly herbal)	Leaf Leaf	Powder Powder	Oral Oral
139	<i>Hedychium rubrum</i> A.S.Rao & D.M.Verma	Zingiberaceae	Bon ada	CBL 39809	EM	411. Rheumatism	Rhizome	Paste	Topical
140	<i>Helicteres isora</i> L.	Malvaceae	Mochra	CBL 36717	EM,NTFP	412. Baby skin care 413. Rope*	Fruit Stem	Soaked	Topical
141	<i>Hemidesmus indicus</i> (L.) R. Br. ex Schult.	Apocynaceae	Anantamul	CBL 36015	EM	414. Skin care 415. Fever* 416. Leucorrhoea 417. Leucorrhoea 418. Infertility 419. Dysmenorrhoea 420. Health strength*	Leaf Leaf Root Root Root Root Root	Paste Juice Powder Powder Powder Powder Powder	Topical Oral Oral Oral Oral Oral Oral
142	<i>Hemigraphis hirta</i> (Vahl) T.Anderson	Acanthaceae	Musakani	CBL 36013	EM,WEP,B	421. Diarrhoea* 422. Constipation* 423. Beverage 424. Country liquor*	Leaf Leaf Leaf Leaf	Juice Cooking Paste Powder	Oral Oral Oral Oral
143	<i>Hibiscus rosa-sinensis</i> L.	Malvaceae	Jaba	CBL 38538	EM	425. Hair care 426. Dysmenorrhoea* 427. Menorrhagia* 428. Skin care* 429. Prevent abortion*	Flower Flower Flower Leaf Leaf	Powder Paste Paste Paste Paste	Topical Oral Oral Topical Oral
144	<i>Hibiscus vitifolius</i> L.	Malvaceae	Bonveri/ Carpus	CBL 36719	WEP, NTFP	430. Edible* 431. Rope, sacks*	Fruit Stem		
145	<i>Holarrhena antidysenterica</i> (Roth) Wall. ex A.DC.	Apocynaceae	Kurchi	CBL 36025	EM,MIS,B	432. Hernia* 433. Piles* 434. Intestinal worm* 435. Beverage* 436. Health drink* 437. Cotton*	Bark Bark Bark Bark Bark Fruit	Powder Boil Powder	Oral Oral Oral

146	<i>Hybanthus enneaspermis</i> (L.) F. Muell.	Violaceae	tumor gach	CBL.37817	EM	438. Tumour* 439. Diarrhoea* 440. Strength* 441. Baby food*	Whole plant Whole plant Leaf Leaf	Paste Paste Paste Paste	Topical Oral Oral Oral
147	<i>Ichnocarpus frutescens</i> (L.) W.T. Aiton	Apocynaceae	Dudhila	CBL.37813	EM,V	442. Asthma* 443. Veterinary*	Fruit Root, leaf	Raw	Oral
148	<i>Imperata cylindrica</i> (L.) Raeusch.	Poaceae	june ghas	CBL.36026	MIS,NTFP	444. Handicrafts 445. Worship	Leaf Leaf		
149	<i>Ipomoea carnea</i> Jacq.	Convolvulaceae	Bon kolmi	CBL.36029	P	446. Poison	Whole plant		
150	<i>Ixora parviflora</i> Lam.	Rubiaceae	Lohajang	CBL.36756	EM,WEP	447. Leucorrhoea* 448. Edible*	Bark Fruit	Decoction	Oral
151	<i>Jatropha curcas</i> L.	Euphorbiaceae	Swet birla	CBL.37819	EM	449. Skin care 450. Fever* 451. Dental care 452. Eye drop* 453. Tooth brush	latex Bark Stem latex Stem	Raw Powder Juice Raw	Oral Oral Oral Topical
152	<i>Jatropha gossypifolia</i> L.	Euphorbiaceae	Bongab	CBL.36028	EM,MIS,V	454. Skin care* 455. Abortion* 456. Pyorrhoea 457. Veterinary 458. Tooth brush	latex Fruit latex latex Stem	Raw Powder Raw	Topical Oral Oral
153	<i>Justicia adhatoda</i> L.	Acanthaceae	Basak	CBL.37846	EM	459. Cold and cough	Leaf	Boil	Oral
154	<i>Lagerstroemia parviflora</i> Roxb.	Lythraceae	Sidha gach	CBL.36769	EM,NTFP	460. Skin care* 461. Wood* 462. Adulterants*	Latex Stem Bark	Raw	Topical
155	<i>Lannea coromandelica</i> (Houtt.) Merr.	Anacardiaceae	Doka	CBL.36077	EM	463. Diarrhoea* 464. Rheumatism	latex Bark	Raw Paste	Oral Topical
156	<i>Lantana camara</i> L.	Verbenaceae	Putus	CBL.36741	WEP	465. Edible	Fruit		
157	<i>Lawsonia inermis</i> L.	Lythraceae	Gurgi	CBL.36763	EM,DY	466. Skin care 467. Dye	Fruit Leaf	Soaked	Topical

Ethnomedicinal uses of plants by the Lodhas tribal group

158	<i>Leucaena leucocephala</i> (Lam.) de Wit	Leguminosae	Rui	CBL 38601	EM	468. Contraceptive* 469. Edible	Leaf Leaf	Paste	Oral
159	<i>Leucas lavandulifolia</i> Sm.	Lamiaceae	Gomma	CBL 38501	EM,WEP	470. Head ache* 471. Edible	Leaf Leaf	Paste	Inhale
160	<i>Leucas aspera</i> (Willd.) Link	Lamiaceae	Ful jhur	CBL 37826	EM	472. Rheumatism*	Whole plant	Boil	Topical
161	<i>Litsea glutinosa</i> (Lour.) C.B.Rob.	Lauraceae	Pojo/Haroo	CBL 38543	EM	473. Rheumatism* 474. Pain killer* 475. Diarrhoea and blood dysentery* 476. Dysmenorrhea	Bark Bark Bark Bark	Paste Paste Decoction Soaked	Topical Topical Oral Oral
162	<i>Lygodium flexuosum</i> (L.) Sw.	Lygodiaceae	Bera jal	CBL 36053	EM	477. Skin care 478. Contraceptive 479. Leucorrhoea* 480. Dog bite* 481. Infertility	Leaf Leaf Leaf Leaf Leaf	Paste Paste Paste Paste Paste	Topical Oral Oral Topical Oral
163	<i>Madhuca longifolia</i> (J.Koenig ex L.) J.F.Macbr.	Sapotaceae	mohua	CBL 36726	EM,WEP,B,MIS	482. Tranquilizer* 483. Pain killer 484. Skin disease 485. Edible 486. Beverage 487. Miscellaneous*	Fruit Fruit Fruit Fruit Fruit Flower	Powder Powder Oil	Oral Oral Topical
164	<i>Mallotus philippensis</i> (Lam.) Mill.Arg.	Euphorbiaceae	Kumkum	CBL 37865	DYP	488. Disinfectant 489. Poison* 490. Dye*	Fruit Fruit Fruit	Boil	Topical
165	<i>Mangifera indica</i> L.	Anacardiaceae	Aam	CBL 36045	EM,WEP,C	491. Diarrhoea 492. Jaundice* 493. Sacred grove	Bark Bark Leaf	Decoction Decoction	Oral Oral
166	<i>Melastoma malabathricum</i> L.	Melastomataceae	Ashok	CBL 36761	WEP,C	494. Edible* 495. Worship*	Fruit Flower		
167	<i>Mimosa rubicaulis</i> Lam.	Leguminosae	Kirkit	CBL 36780	EM,MR	496. Skin care 497. Fever* 498. Magico-religious	Whole plant Thorn Stem	Paste Powder	Topical Oral

168	<i>Mimosa pudica</i> L.	Leguminosae	Lojjaboti	CBL.36058	EM	499. Diarrhoea* 500. Indigestion* 501. Fever	Whole plant Whole plant Whole plant	Decoction Decoction Decoction	Oral Oral Oral
169	<i>Mitragyna parvifolia</i> (Roxb.) Korth.	Rubiaceae	Korom	CBL.36081	C	502. Sacred plant*	Whole plant		
170	<i>Momordica charantia</i> L.	Cucurbitaceae	Ucche	CBL.38504	WEP	503. Edible	Fruit		
171	<i>Moringa oleifera</i> Lam.	Moringaceae	Sojne	CBL.36736	EM,NTFP	504. Malaria* 505. Hypertension* 506. Fuel 507. Insecticide*	Bark Flower Whole plant Whole plant	Powder Juice	Oral Oral
172	<i>Morus indica</i> L.	Moraceae	Tut	CBL.38549	WEP	508. Edible*	Fruit		
173	<i>Mucuna pruriens</i> (L.) DC.	Leguminosae	Nengush	CBL.39821	EM	509. Diarrhoea			
174	<i>Murdannia nudiflora</i> (L.) Brenan	Commiliniaceae	Salanti	CBL.38596	EM,WEP	510. Diarrhoea* 511. Edible*	Whole plant Leaf	Paste	Oral
175	<i>Murraya koenigii</i> (L.) Spreng.	Rutaceae	Kari pata	CBL.38561	EM,WEP	512. Stomach upset* 513. Edible*	Leaf Leaf	Juice	Oral
176	<i>Musa × paradisiaca</i> L.	Musaceae	Kadali	CBL.36063	EM,WEP	514. Menorrhagia 515. Leucorrhoea 516. Diarrhoea 517. Spermatorrhea* 518. Edible	Root Stem Root Root Fruit	Powder Juice Juice Powder	Oral Oral Oral Oral
177	<i>Neolamarckia cadamba</i> (Roxb.) Bosser	Rubiaceae	Kadam	CBL.36792	EM	519. Diabetes* 520. Fever	Leaf Leaf	Decoction Juice	Oral Oral
178	<i>Nicotiana tabacum</i> L.	Solanaceae	Khoyer	CBL.37859	EM,N	521. Scorpion bite 522. Narcotic	Leaf Leaf	Paste	Topical
179	<i>Nyctanthes arbor-tritis</i> L.	Oleaceae	Seuli	CBL.36718	EM,WEP	523. Fever 524. Tapeworm 525. Typhoid*	leaf Bark, Leaf Leaf	Juice Paste Juice	Oral Oral Oral

180	<i>Ocimum basilicum</i> L.	Lamiaceae	Bon tuisi	CBL.38544	WEP	526. Cold and cough 527. Jaundice* 528. Edible	Leaf Leaf Leaf	Boil Raw	Oral Oral
181	<i>Olax scandens</i> Roxb.	Olaaceae	Bhadori	CBL.36066	EM,WEP	529. Blood purification 530. Edible	Leaf Leaf	Cooking	Oral
182	<i>Oroxylum indicum</i> (L.) Kurz	Bignoniaceae	Sui mara gach	CBL.38559	EM,WEP	531. Jaundice* 532. Malaria* 533. Edible	Fruit Fruit Fruit	Powder Powder	Oral Oral
183	<i>Oryza sativa</i> L.	Poaceae	Mota hajar dash	CBL.36083	EM,C	534. Edible 535. Worship*	seed seed		
184	<i>Oxalis corniculata</i> L.	Oxalidaceae	Tak mamul	CBL.36052	EM,WEP	536. Remove thirst* 537. Jaundice* 538. Liver problem* 539. Appetizer* 540. Edible	Leaf Leaf Leaf Leaf Leaf	Raw Juice Juice Raw	Oral Oral Oral Oral
185	<i>Parthenium hysterophorus</i> L.	Compositae	Nagдона	CBL.37812	EM	541. Head ache*	Leaf	Paste	Topical
186	<i>Pericampylus glaucus</i> (Lam.) Merr.	Menispermaceae	Katha	CBL.36098	EM	542. Rheumatism*	Leaf, root	Boil	Oral
187	<i>Perristrophe bicalyculata</i> (Retz.) Nees	Acanthaceae	Jinjhine	CBL.36732	EM	543. Tooth ache*	Root	Juice	Oral
188	<i>Persicaria barbata</i> (L.) H.Hara	Polygoniaceae	Jongli jira	CBL.38522	V	544. Veterinary*	Fruit		
189	<i>Persicaria hydropiper</i> (L.) Delarbre	Polygoniaceae	Kanta mala	CBL.38519	EM,P,V	545. Fish poison* 546. Poison* 547. Veterinary *	Fruit Fruit Fruit		
190	<i>Phoenix sylvestris</i> (L.)Roxb.	Areaceae	Khejur	CBL.39814	WEP, NTFP	548. Edible 549. Rope * 550. Handicrafts	Fruit Leaf Leaf		
191	<i>Phoenix acaulis</i> Roxb.	Areaceae	Khejur kul	CBL.36023	EM,WEP,NTFP	551. Menorrhagia 552. Dysmenorrhea 553. Edible 554. Handicrafts	Root Fruit Fruit Leaf	Powder Raw	Oral Oral

192	<i>Phyllanthus emblica</i> L.	Phyllanthaceae	Amla	CBL.36075	EM,WEP	555. Hair care 556. Stomach pain * 557. Edible	Fruit Fruit Fruit	Paste Boil	Topical Oral
193	<i>Phyllanthus niruri</i> L.	Phyllanthaceae	Bhui amla	CBL.37815	EM	558. Liver disorder * 559. Jaundice *	Leaf Leaf	Paste Paste	Oral Oral
194	<i>Phyllanthus virgatus</i> G. Forst.	Phyllanthaceae	Amla	CBL.37835	WEP	560. Edible	Fruit		
195	<i>Piper betle</i> L.	Piperaceae	Pan	CBL.39820	EM	561. Piles *	Leaf	Paste	Topical
196	<i>Plumbago zeylanica</i> L.	Plumbaginaceae	Chitner	CBL.38531	EM,MR	562. Jaundice * 563. Magico- religious	Leaf Whole plant	Juice	Oral
197	<i>Plumeria rubra</i> L.	Apocynaceae	Dolon chapa	CBL.38564	EM,B	564. Rheumatism 565. Stomach pain 566. Veterinary	Bark Bark Bark	Paste Boil	Topical Oral
198	<i>Pogostemon benghalensis</i> (Burm.f.) Kuntze	Lamiaceae	Begunilata	CBL.38562	EM,WEP	567. Skin burn 568. Edible 569. Beverage	Leaf Leaf Leaf	Paste	Topical
199	<i>Portulaca oleracea</i> L.	Portulacaceae	Rakhito	CBL.36770	WEP	570. Wild edible	Leaf		
200	<i>Psidium guajava</i> L.	Myrtaceae	Peyara	CBL.38585	EM,WEP,M- R,MIS	571. Diarrhoea 572. Dental care 573. Edible 574. Magico-religious * 575. Tooth brush *	Leaf Leaf Fruit Whole plant Stem	Paste Juice	Oral Oral
201	<i>Pterocarpus marsupium</i> Roxb.	Leguminosae	Piya sal	CBL.37828	EM,NIFP	576. Diabetes * 577. Sex debility* 578. Dysmenorrhea * 579. Fuel *	Bark Root Root leaf	Decoction Powder Powder	Oral Oral Oral
202	<i>Pterospermum acerifolium</i> (L.) Willd.	Malvaceae	Muchkundo	CBL.38565	EM,B	580. Vomiting * 581. Diarrhoea * 582. Beverage *	Leaf Leaf Flower	Decoction Decoction	Oral Oral
203	<i>Pueraria tuberosa</i> (Willd.) DC.	Leguminosae	Bhui kumro	CBL.37836	EM,WEP	583. Diabetes * 584. Obesity * 585. Edible	Tuber Tuber Tuber	Powder Powder	Oral Oral

204	<i>Rauwolfia serpentina</i> (L.) Benth. ex Kurz	Apocynaceae	Patal garur	CBL.36050	EM	586. Leucorrhoea 587. Skin burn * 588. Snake bite	Root Leaf Leaf	Powder Paste Paste	Oral Topical Topical
205	<i>Rauwolfia tetraphylla</i> L.	Apocynaceae	Patal garur	CBL.36788	EM	589. Leucorrhoea *	Root	Powder	Oral
206	<i>Ricinus communis</i> L.	Euphorbiaceae	Varenda	CBL.39802	WEP	590. Dental plaque * 591. Skin care * 592. Camation * 593. Piles *	Bark Leaf Leaf Fruit	Powder Paste Paste Boil	Oral Oral Topical Topical
207	<i>Rivea hypocrateriformis</i> Choisy	Convolvulaceae	Bon pui	CBL.36009	EM	594. Rheumatism 595. Skin care 596. Snake bite * 597. Edible	Root Leaf Leaf Leaf	Paste Paste Paste	Topical Topical Topical
208	<i>Rumex hymenosepalus</i> Torr.	Polygoniaceae	Begna	CBL.39806	EM	598. Asthma	Root	Juice	Oral
209	<i>Saccharum spontaneum</i> L.	Poaceae	Kash	CBL.38591	NTPP	599. Thatching 600. Fishing instrument*	Stem Leaf Stem		
210	<i>Salacia chinensis</i> L.	Celastraceae	Bishfol	CBL.36775	EM,P	601. Hair care * 602. Poison *	Fruit Fruit	Boil	Topical
211	<i>Santalum album</i> L.	Santalaceae	Chandan	CBL.39815	EM	603. Head ache *	Bark	Paste	Topical
212	<i>Scoparia dulcis</i> L.	Plantaginaceae	Dalchini	CBL.36012	EM,WEP	604. Stop bleeding 605. Skin care 606. Ulcer * 607. Hypertension * 608. Edible	Leaf Leaf Whole plant Whole plant Whole plant	Paste Paste Boil Juice	Topical Topical Oral Oral
213	<i>Senna sophora</i> (L.) Roxb.	Leguminosae	Jhunjhuni	CBL.37801	EM,WEP	609. Skin eruption 610. Rheumatism * 611. Edible	Stem Leaf Leaf	Paste Cooking	Topical Oral
214	<i>Sesamum indicum</i> L.	Pedaliaceae	Til	CBL.37862	EM,WEP	612. Diabetes * 613. Postpartum care* 614. Rheumatism * 615. Edible	Seed Seed Seed Seed	Paste Roasted Oil	Oral Oral Topical

215	<i>Shorea robusta</i> Gaertn.	Dipterocarpaceae	Sal	CBL.36021	EM,N,NTFP,MIS	616. Diarrhoea 617. Pyorrhoea * 618. Handicrafts 619. Narcotic * 620. Tooth brush *	latex Stem Leaf Leaf Stem	Raw Juice	Oral Oral
216	<i>Sida rhombifolia</i> L.	Malvaceae	Jakhai	CBL.38524	WEP	621. Edible	Leaf		
217	<i>Sida acuta</i> Burm.f.	Malvaceae	Jakha sag	CBL.37818	EM,WEP	622. Skin care 623. Edible	Leaf Leaf	Paste	Topical
218	<i>Smilax zeylanica</i> L.	Smilacaceae	Ram datun	CBL.36056	EM,MR,MIS	624. Leucorrhoea 625. Fever 626. Tooth ache 627. Pyorrhoea * 628. Magico-religious 629. Health strength * 630. Birth stimulant* 631. Rheumatism* 632. Tooth brush	Root Root Stem Root Root Bark Root Root Stem	Powder Decoction Juice Juice Powder Juice boil	Oral Oral Oral Oral Oral Oral Topical
219	<i>Solanum virginianum</i> L.	Solanaceae	Kanta Begun	CBL.36737	EM,WEP	633. Skin disease 634. Asthma* 635. Cold and cough* 636. Rheumatism * 637. Edible	Thorn Fruit Fruit Root Fruit	Paste Powder Powder Fried	Topical Oral Oral Oral
220	<i>Solena amplexicaulis</i> (Lam.) Gandhi	Cucurbitaceae	Rakhal kundri	CBL.37888	EM,WEP,B	638. Infertility 639. Leucorrhoea 640. Dysmenorrhea 641. Edible 642. Beverage*	Root Root Root Tuber Tuber	Powder Powder Powder	Oral Oral Oral
221	<i>Solena heterophylla</i> Lour.	Cucurbitaceae	Mahakalla	CBL.38557	EM	643. Rheumatism * 644. Edible	Tuber Fruit	Powder	Oral
222	<i>Soymida febrifuga</i> (Roxb.) A. Juss.	Meliaceae	bon gach	CBL.36762	EM	645. Skin disease * 646. Fever * 647. Cold and cough 648. Leucorrhoea *	Bark Bark Bark Root	Paste Decoction Decoction Powder	Topical Oral Oral Oral
223	<i>Spermacoce hispida</i> L.	Rubiaceae	Madhu	CBL.36789	EM	649. Leucorrhoea * 650. Urinary trouble* 651. Cold and cough 652. Sinus * 653. Diabetes	Flower Whole plant Flower Flower Whole plant	Powder Boil Powder Powder Cooking	Oral Oral Oral Oral Oral

224	<i>Sporobolus spicatus</i> (Vahl) Kunth	Poaceae	Bon Durani	CBL 36071	F,NTFP	654. Mat making * 655. Fodder*	Leaf Leaf		
225	<i>Stachytarpheta indica</i> (L.) Vahl	Verbenaceae	Begna	CBL 38520	EM,WEP,P	656. Head ache* 657. Edible 658. Poison*	Leaf Leaf Root	Paste	Inhale
226	<i>Stephania glabra</i> (Roxb.) Miers	Menispermaceae	Bon pui	CBL 37816	EM,WEP	659. Snake Scorpion bite * 660. Edible *	Leaf Leaf	Paste Paste	Topical Topical
227	<i>Streblus asper</i> Lour.	Moraceae	Seora	CBL 36011	EM,V,MIR	661. Skin disease 662. Magico-religious 663. Veterinary	Leaf Whole plant Whole plant	Paste	Topical
228	<i>Strychnos nux-vomica</i> L.	Loganiaceae	Kuchla	CBL 36095	EM,P	664. Dog bite * 665. Pain killer * 666. Dysmenorrhea * 667. Poison	Fruit Fruit Fruit Fruit	Paste Powder Powder	Topical Oral Oral
229	<i>Swietenia mahagoni</i> (L.) Jacq.	Meliaceae	Mahajal	CBL 36079	NTFP, MIS	668. Fuel * 669. Timber *	Stem Stem		
230	<i>Symplocos racemosa</i> Roxb.	Symplocaceae	Piplash	CBL 36080	EM,B,V, MIS	670. Rheumatism * 671. Body cooling * 672. Beverage * 673. Veterinary 674. Cotton *	Leaf Leaf Leaf Leaf Stem	Boil Paste	Topical Oral
231	<i>Syzygium cumini</i> (L.) Skeels	Myrtaceae	Jam kul	CBL 36073	EM,WEP,P	675. Diabetes * 676. Diarrhoea 677. Edible	Bark Fruit Fruit	Decoction Raw	Oral Oral
232	<i>Tabernaemontana divaricata</i> (L.) R.Br. ex Roem. & Schult.	Apocynaceae	Sada ful	CBL 38518	EM, MIS	678. Throat problem * 679. Ornamental plant	Leaf Flower	Juice	Oral
233	<i>Tagetes erecta</i> L.	Compositae	Ganda	CBL 38541	EM	680. Wound healing *	Leaf	Paste	Topical
234	<i>Tamarindus indica</i> L.	Leguminosae	tentul	CBL 37845	EM	681. Sex debility * 682. Obesity* 683. Edible	Root Root Fruit	Powder Powder	Oral Oral
235	<i>Tephrosia purpurea</i> (L.) Pers.	Leguminosae	Bon biri	CBL 38589	EM,WEP	684. Headache * 685. Edible	Root Flower	Paste	Topical

236	<i>Terminalia arjuna</i> (Roxb. ex DC.) Wight & Arn.	Combretaceae	Arjun	CBL 36733	EM,WEP	686. Skin care * 687. Skin burn * 688. Rheumatism* 689. Diarrhoea * 690. Edible*	Fruit Fruit Fruit Bark Fruit	Roasted Roasted Roasted Powder	Topical Topical Topical Oral
237	<i>Terminalia bellirica</i> (Gaertn.) Roxb	Combretaceae	Behera	CBL 36022	EM,MIS	691. Cold and cough* 692. Ear pain 693. Skin care 694. Skin burn 695. Rheumatism 696. Spices	Fruit Fruit Fruit Fruit Fruit Fruit	Powder Powder Roasted Roasted Roasted	Oral Topical Topical Topical Topical
238	<i>Terminalia chebula</i> Retz.	Combretaceae	Hartaki	CBL 36747	EM,MIS	697. Cold and cough* 698. Leucoderma 699. Skin care 700. Burn 701. Rheumatism* 702. Spice	Fruit Fruit Fruit Fruit Fruit Fruit	Powder Paste Roasted Roasted Roasted	Oral Topical Topical Topical Topical
239	<i>Tinospora sinensis</i> (Lour.) Merr.	Menispermaceae	Gulancha	CBL 37861	EM,B	703. Fever * 704. Rheumatism 705. Leucorrhoea* 706. Diabetes* 707. Hypertension 708. Beverage	Root Stem Stem Stem Stem Leaf	Decoction Paste Soaked Powder Soaked	Oral Topical Oral Oral Oral
240	<i>Trachyspermum roxburghianum</i> (DC.) H. Wolff	Apiaceae	Bon jira	CBL 38516	EM, WEP	709. Fever * 710. Edible	Fruit Fruit	Boil	Oral
241	<i>Uraria lagopodioides</i> (L.) DC.	Leguminosae	Chakuli	CBL 38594	EM	711. Abortion	Whole plant	Raw	Oral
242	<i>Vanda tessellata</i> (Roxb.) Hook. ex G. Don	Orchidaceae	Banki	CBL 37825	EM,C	712. Paralysis * 713. Rheumatism 714. Sacred grove	Leaf Leaf Whole plant	Paste Paste	Topical Topical
243	<i>Ventilago denticulata</i> Willd.	Rhamnaceae	Aturi	CBL 36099	EM	715. Postpartum pain* 716. Postpartum body swelling*	Leaf Whole plant	warm Juice	Topical Oral

244	<i>Vigna radiata</i> (L.) R. Wilezek	Leguminosae	Bon mung	CBL.36069	WEP,V	717. Edible 718. Veterinary	Fruit Fruit		
245	<i>Viscum articulatum</i> Burm. f.	Santalaceae	Hajjora	CBL.38561	EM	719. Bone fracture	Whole plant	Paste	Topical
246	<i>Pitex negundo</i> L.	Lamiaceae	Bagna	CBL.37806	EM,V	720. Snake bite * 721. Veterinary * 722. Mosquito repellent	Leaf Leaf Leaf	Juice	Oral
247	<i>Woodfordia fruticosa</i> (L.) Kurz	Lythraceae	Dhadki	CBL.36034	EM	723. Leucorrhoea	Root	Powder	Oral
248	<i>Ziziphus nummularia</i> (Burm.f.) Wight & Arn.	Rhamnaceae	Chia kul	CBL.36728	EM,WEP	724. Rheumatism * 725. Edible	Bark Fruit	Burn	Topical
249	<i>Ziziphus oenopolia</i> (L.) Mill.	Rhamnaceae	Chia kul	CBL.37844	WEP	726. Edible	Fruit		
250	<i>Zornia gibbosa</i> Span.	Leguminosae	Bon gima	CBL.36067	EM,WEP	727. Kidney stone * 728. Edible*	Fruit Fruit	Paste	Oral

* First report on ethnobotanical uses by the Lodhas

B-Beverage, C- Conservation, F- Fodder, DY- Dye- yielding plants, EM- Ethnomedicine, V-Veterinary, WEP- Wild edible plants, MIS- Miscellaneous, MR- Magico-religious, N- Narcotic, NTFP- Non-timber forest product, P-Poison, PI-Poison indicator, CBL- Central Botanical Laboratory